



**Southern Centrifugal Division**  
4180 S. Creek Rd / Chattanooga, TN 37406  
Ph: 423-622-4131 Fx: 423-622-2227

February 14, 2014

**Lodge Manufacturing**  
204 East 5<sup>th</sup> Street  
P.O. Box 380  
South Pittsburg, TN 37380

**Trecia Johnson,**

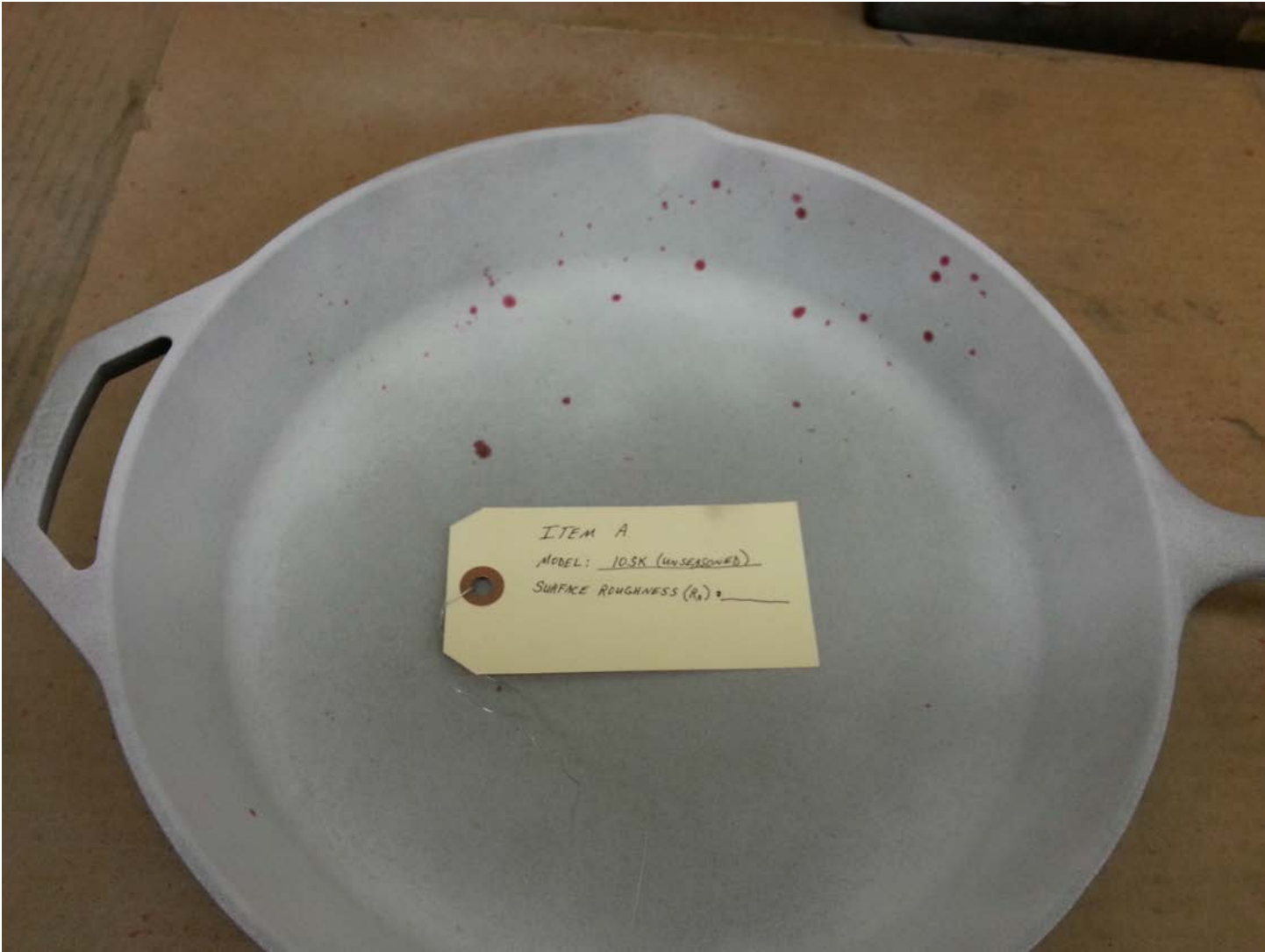
**Informational NDE Testing Results on (4) cast iron vessels:**

Item	Desc.	Avg. Surface Roughness (Ra)	LP Indications (Traditional)	LP Indications (After Wash)
A	Unseasoned Skillet	250 +	70 +	
B	Unseasoned Skillet	250 +	15	
C	Seasoned Skillet	249	1	
D	Seasoned Platter	210	1	

The surface roughness conversion data, surface roughness analysis, and liquid penetrant testing was performed by MetalTek as a service to Lodge. All data, results, and photographs resulting from this testing are to be used for informational purposes only. MetalTek does not, in any way, intend to represent itself as having compliance knowledge or experience with any type of "Cleanability" measure or specification. Additionally, MetalTek does not intend to represent the liquid penetrant, solvent, and/or developer chemicals used during the testing as safe or approved for use in food related industries.

Regards,

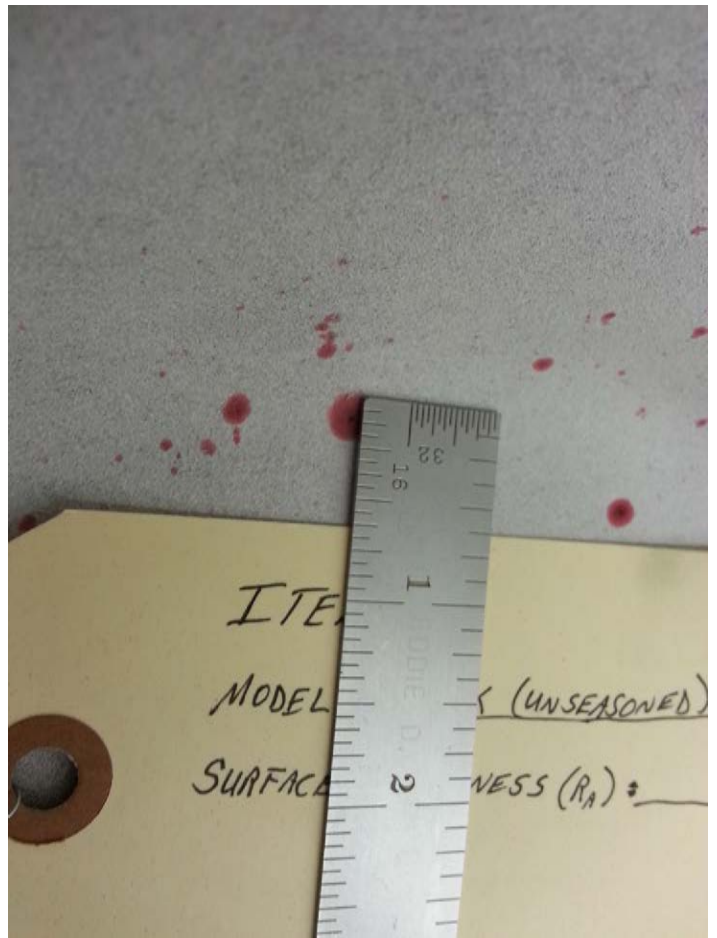
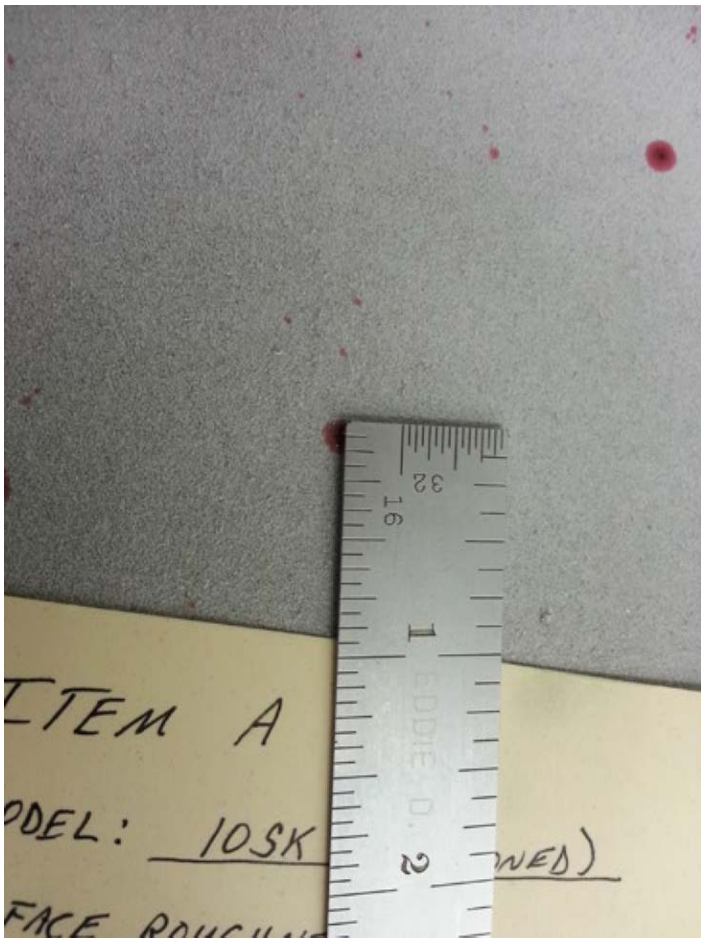
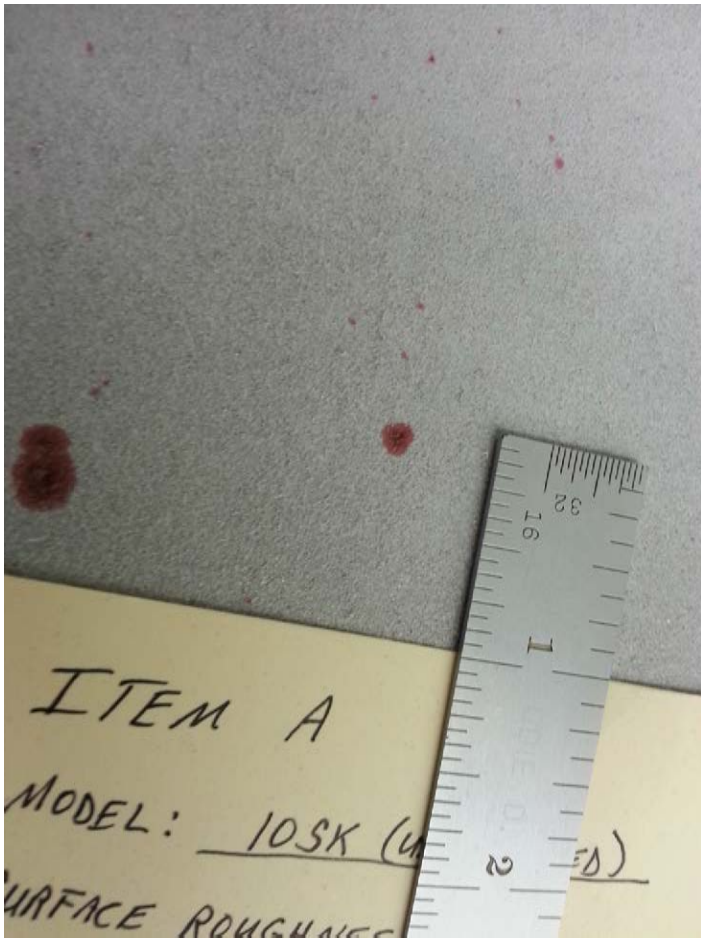
Gary W. Boles  
Machine Shop Manager  
MetalTek International  
Southern Centrifugal Div.

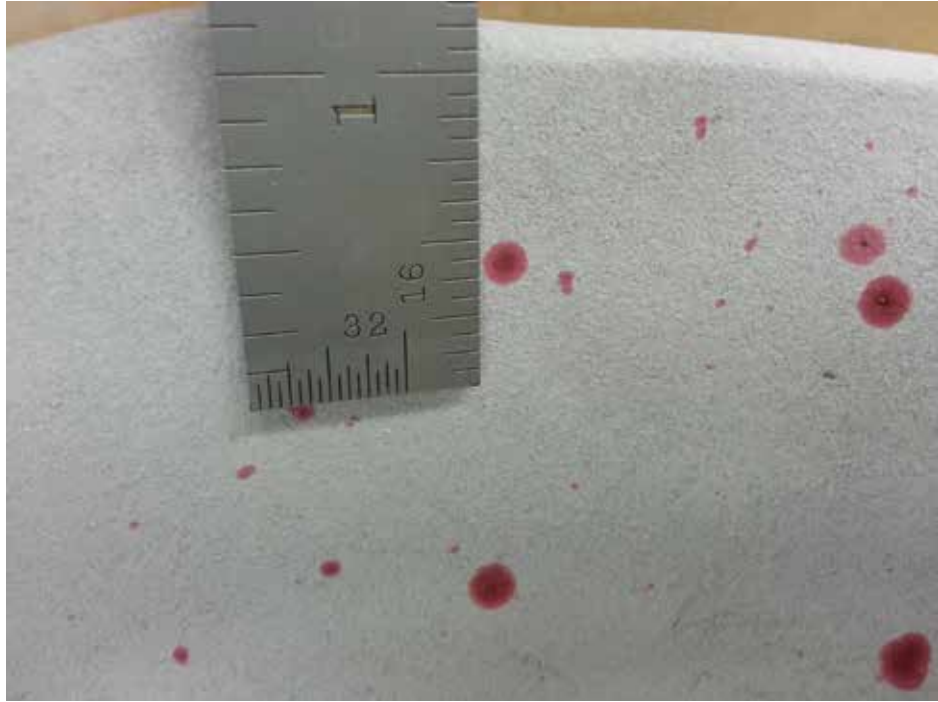


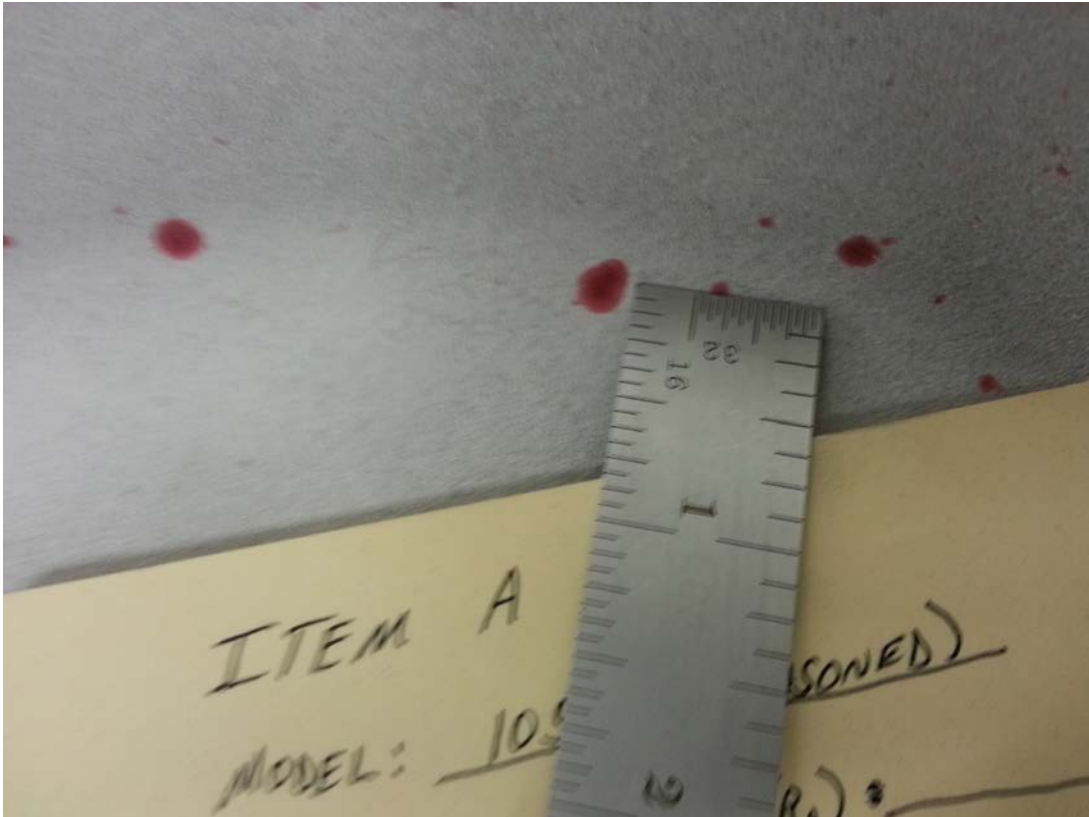
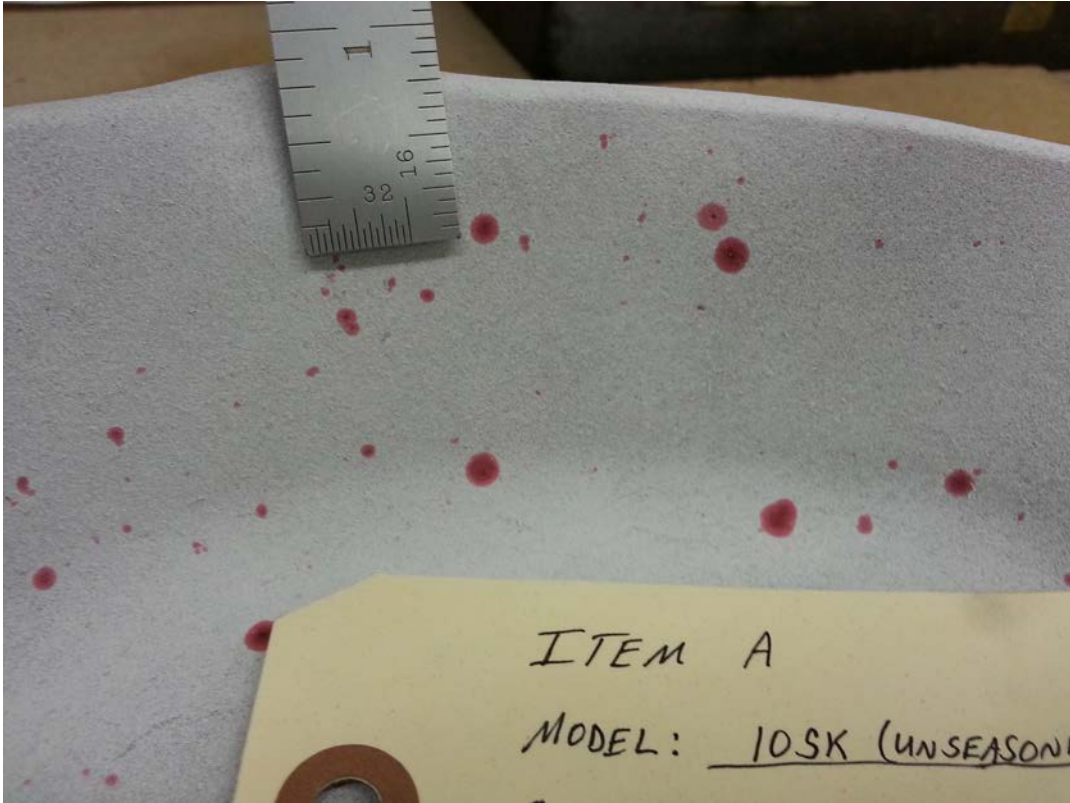
ITEM A

MODEL: 10SK (UNSEASONED)

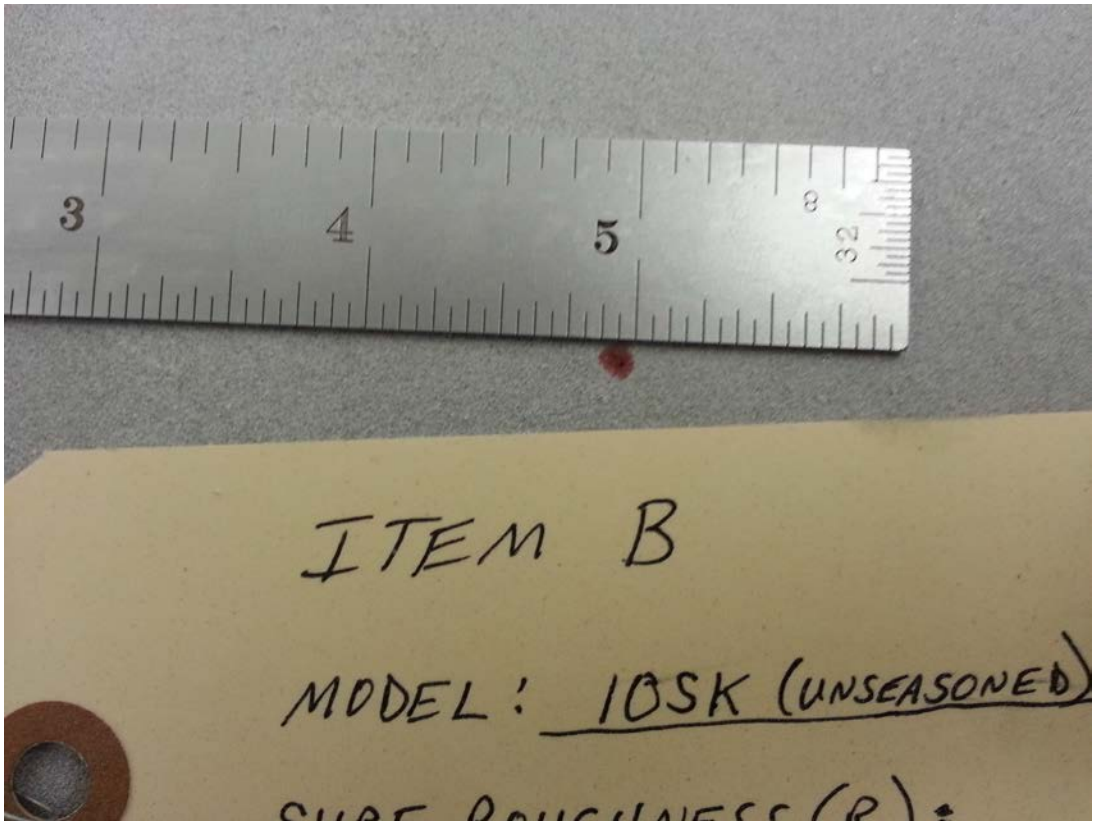
SURFACE ROUGHNESS ( $R_a$ ) = \_\_\_\_\_







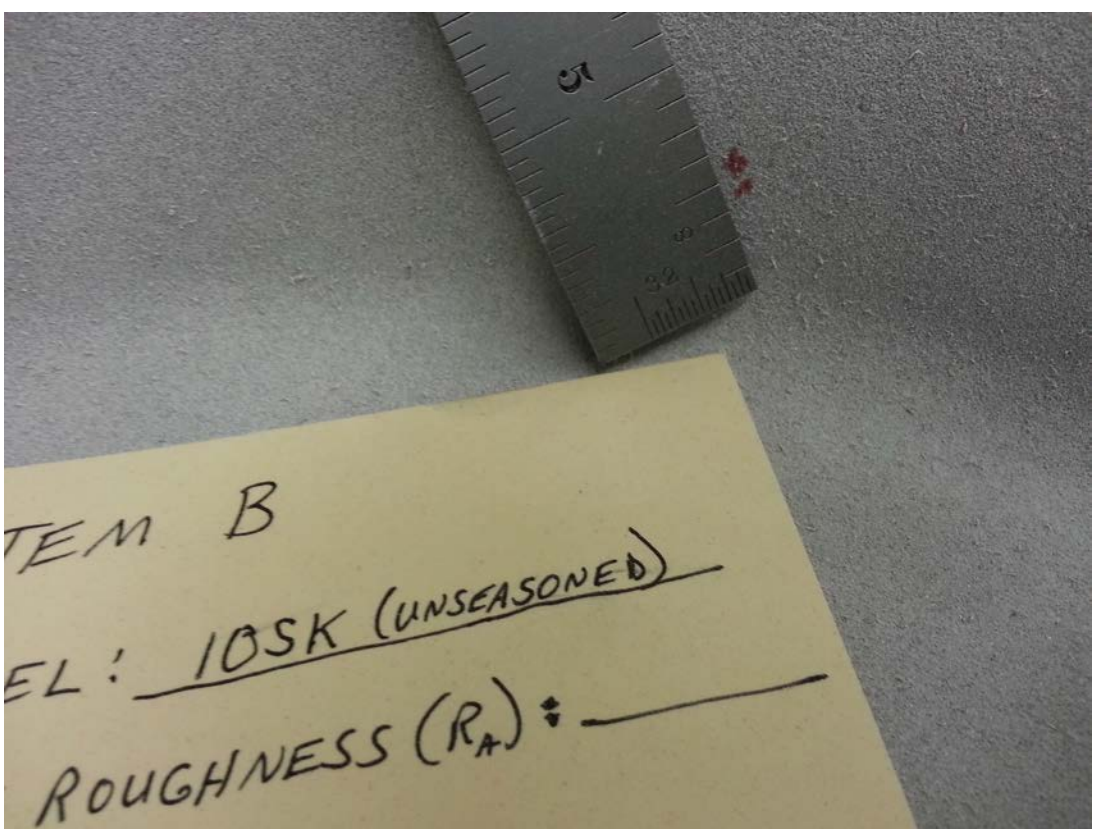




ITEM B

MODEL: 10SK (UNSEASONED)

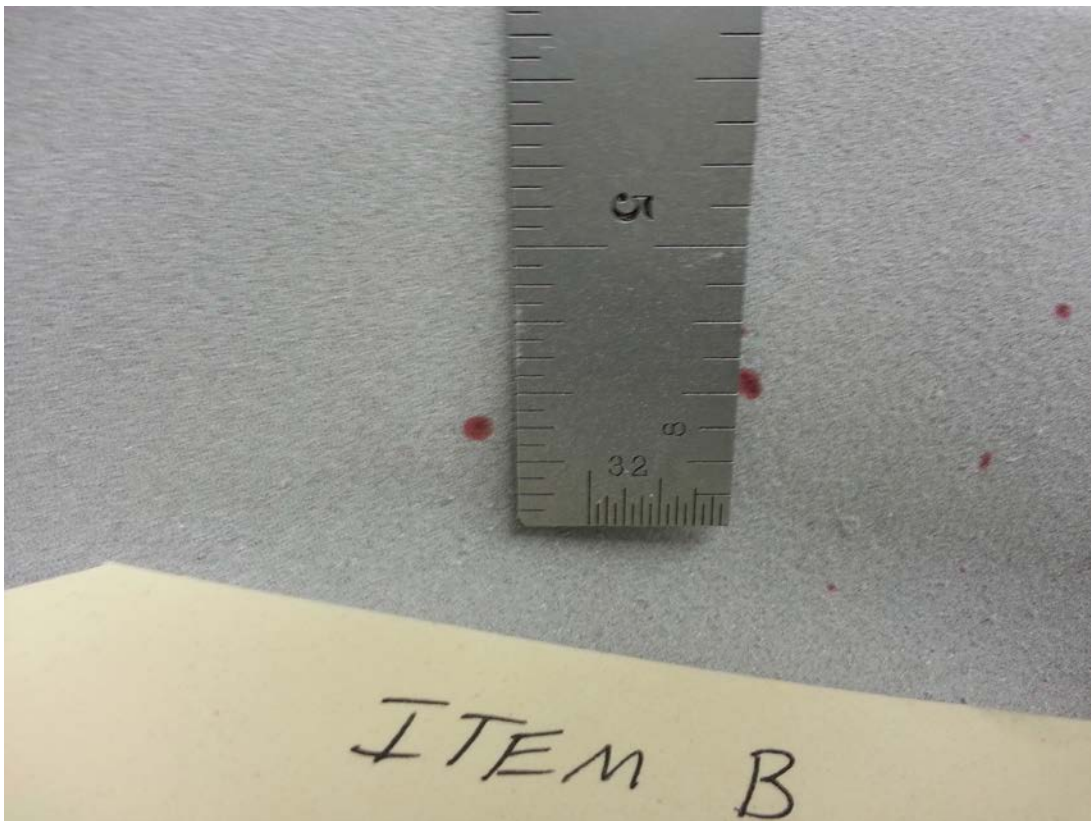
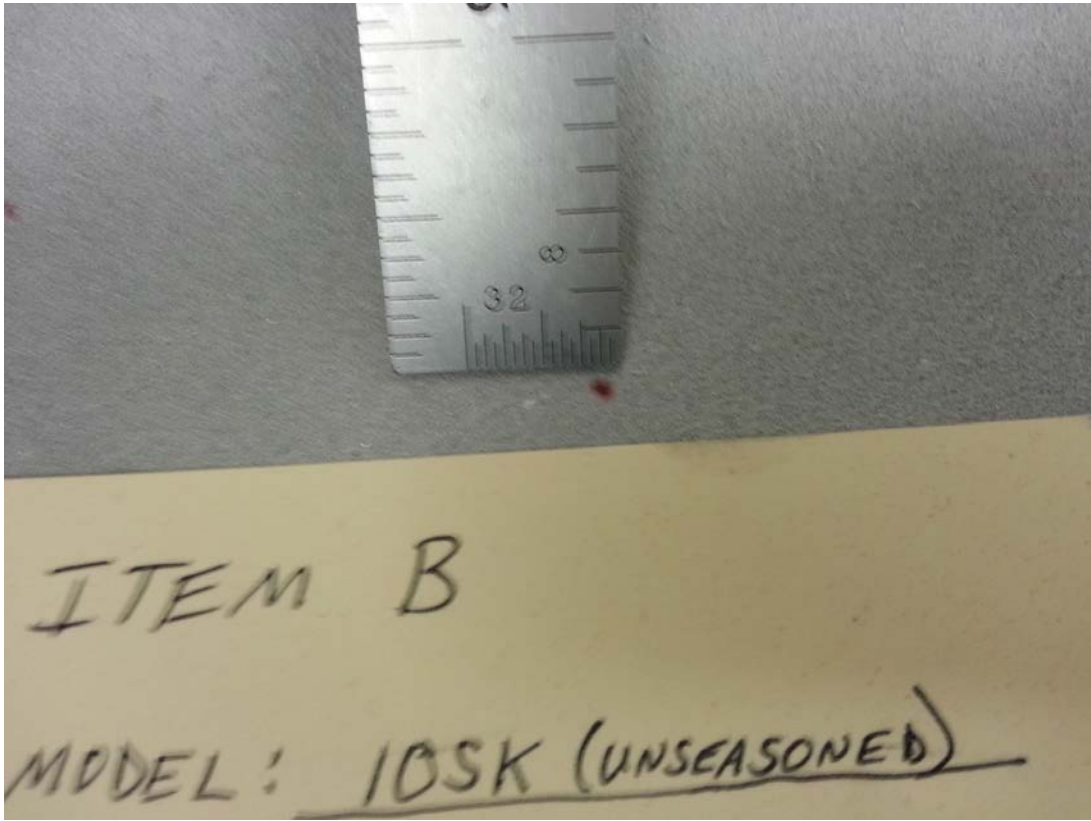
ROUGHNESS ( $R_A$ ): \_\_\_\_\_



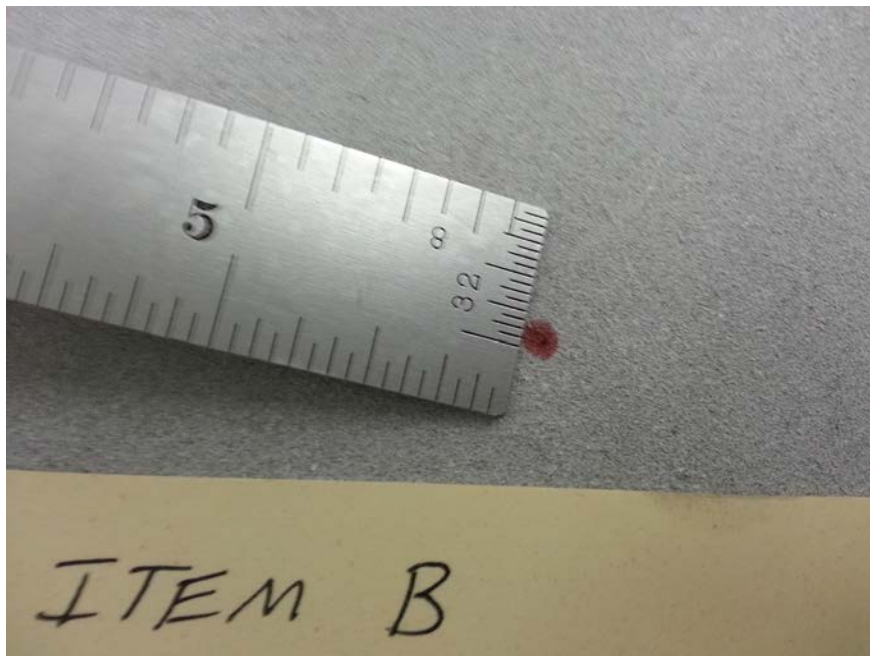
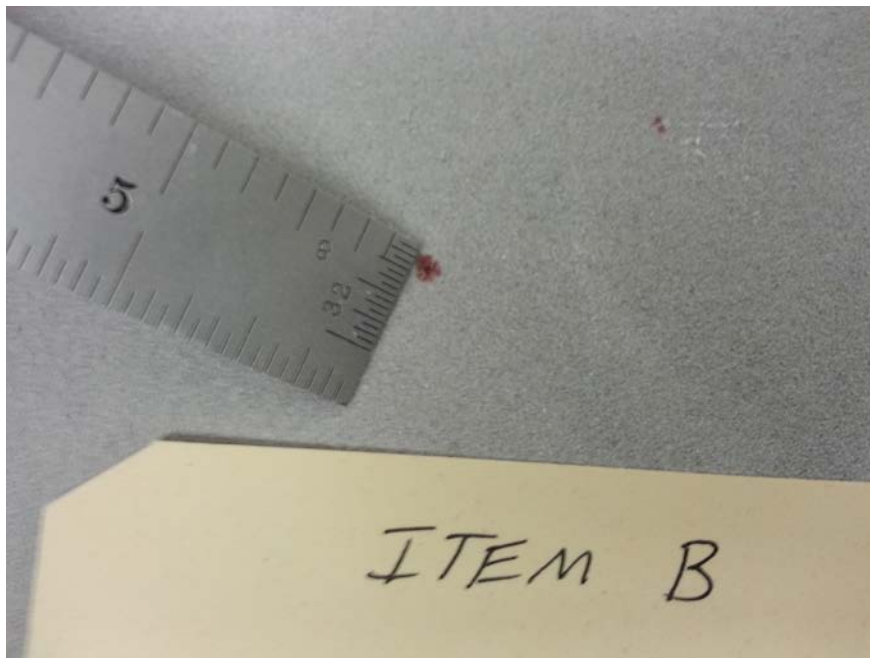
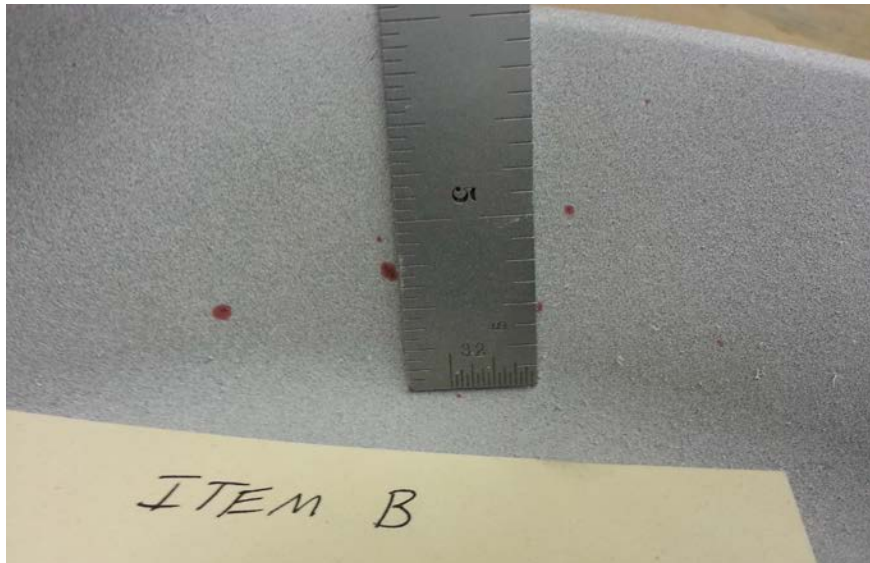
ITEM B

MODEL: 10SK (UNSEASONED)

ROUGHNESS ( $R_A$ ): \_\_\_\_\_









ITEM C  
MODEL: L103R3  
304K. ROUGH

MADE IN THE USA

ITEM C

MODEL: L10SK3



ITEM C  
MODEL : L10SK3  
SURF. ROUGHNESS :  
 $R_a = 249$



ITEM D

MODEL: LJOSH3

SURF. ROUGHNESS: \_\_\_\_\_

Ra =  $\frac{209}{211}$



Southern Centrifugal Division  
4180 S. Creek Rd / Chattanooga, TN 37406  
Ph: 423-622-4131 Fx: 423-622-2227

February 17, 2014

Lodge Manufacturing  
204 East 5<sup>th</sup> Street  
P.O. Box 380  
South Pittsburg, TN 37380

Trecia Johnson,

**Informational NDE Testing Results on (4) cast iron vessels:**

Item	Desc.	Avg. Surface Roughness (Ra)	LP Indications (Traditional)	LP Indications (After Wash)
A	Unseasoned Skillet	250 +	70 +	N/A
B	Unseasoned Skillet	250 +	15	N/A
C	Seasoned Skillet	249	1	1
D	Seasoned Platter	210	1	1

The surface roughness conversion data, surface roughness analysis, and liquid penetrant testing was performed by MetalTek as a service to Lodge. All data, results, and photographs resulting from this testing are to be used for informational purposes only. MetalTek does not, in any way, intend to represent itself as having compliance knowledge or experience with any type of "Cleanability" measure or specification. Additionally, MetalTek does not intend to represent the liquid penetrant, solvent, and/or developer chemicals used during the testing as safe or approved for use in food related industries.

Regards,

Gary W. Boles  
Machine Shop Manager  
MetalTek International  
Southern Centrifugal Div.

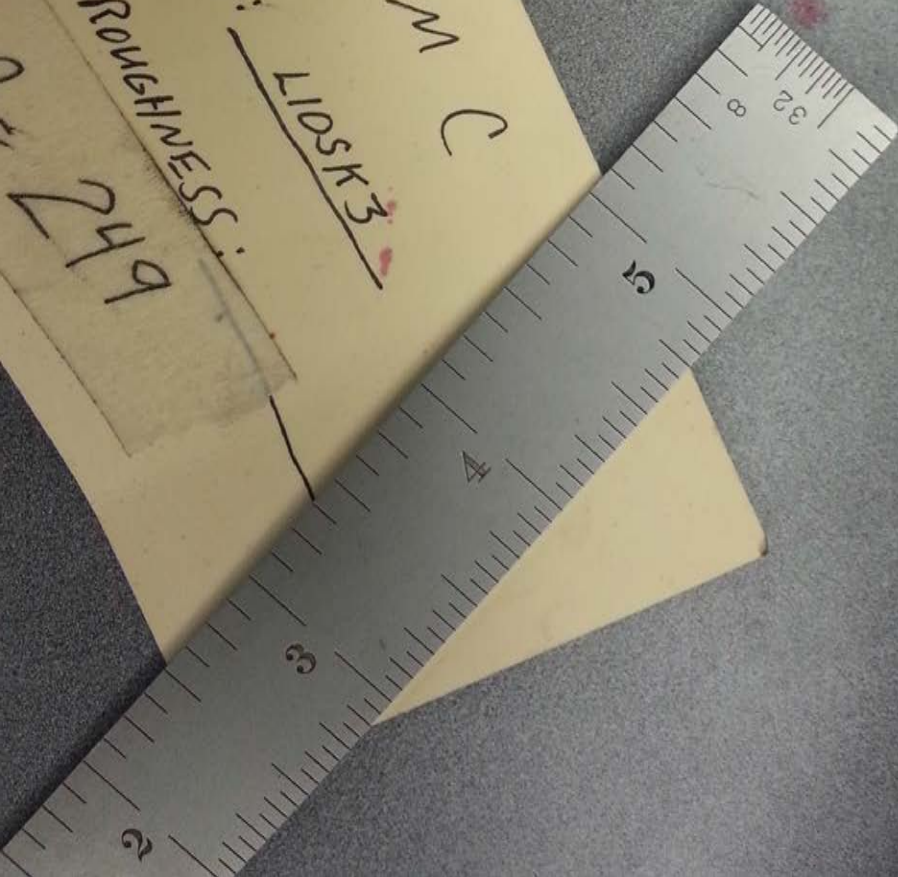


ITEM C  
MODEL: 10583  
SAFE RUGGNESS  
Re: 249

MADE IN THE USA



ITEM C  
MODEL: L10SK3  
SURF. ROUGHNESS: 249





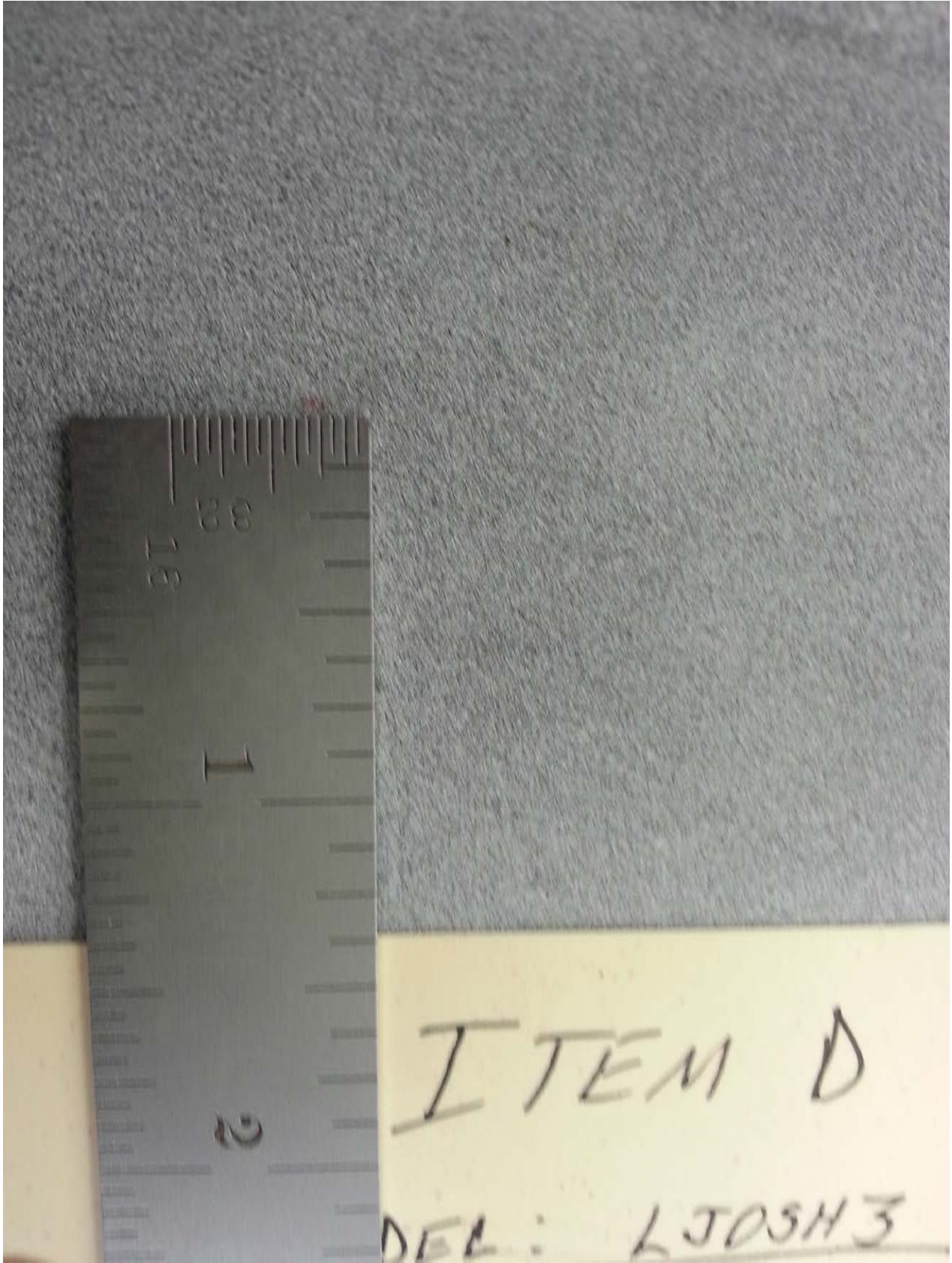
R

2/211

ITEM D

MATERIAL: LTP001

REVISION: \_\_\_\_\_



ITEM D

DEL: LJOSH3